



The PAW PRINT



**EAST LONDON
SPCA**

NPO: 00-532

Tel: 043-745 1441

Emergencies A/H: 083 446 8682

fundraising@elspca.org.za

OFFICIAL NEWSLETTER

First Quarter - 2022

New Top Dog at East London SPCA

Senior Inspector Andries Venter was appointed general manager of the East London SPCA on 1 January 2022 and commenced service on 4 January 2022.

The East London SPCA had been running without a general manager since May 2021. Although the staff and society were able to cope under the hand of the National Council of Societies for the Prevention of Cruelty to Animals (NSPCA), they were in need of a strong, experienced and passionate manager to take leadership, reinvigorate the team and improve service delivery in accordance with its constitutional mandate.

Senior Inspector (SI) Venter served in the South African Defence Force in 1993 with the dog unit in Burk's Luck, where he gained experience in handling and training dogs.

When he completed his compulsory service, he joined the Pretoria (now Tshwane) SPCA and qualified as an Inspector in 1995. Since then, he moved up in the SPCA movement and qualified as a Senior Inspector in 2000.

In 2006 he took up the leadership of the Cape of Good Hope SPCA Inspectorate where he trained 20 Inspectors and modernised the Cape of Good Hope Inspectorate which improved skills and service delivery. SI Venter gained the Chief Inspectorate Status in 2008.

The Animal Cops South Africa series on satellite channel, Animal Planet was filmed in Cape Town with SI Venter's team of Inspectors.

SI Venter then joined the NSPCA's Liaison Unit as the Western and Northern Cape Liaison Officer where he managed and looked after the SPCAs in those regions.

Thereafter he managed the Farm Animal Protection Unit in 2011.



NEW BROOM SWEEPS CLEAN: The East London SPCA recently appointed Andries Venter as their new General Manager. Photo: SUPPLIED

SI Venter decided in 2015 to take a hiatus from the SPCA - and essentially animal welfare - at which time he started working in the construction industry in Cape Town and ran a company with a business partner, until he was approached by the NSPCA at the end of 2021 to join the East London SPCA team as General Manager to ensure and assist with restoring the Society in the city to its former glory.

SI Venter has to attend refresher courses and update his relevant registrations to regain his status within the movement; however, in the meantime East London SPCA will benefit from his extensive knowledge, experience and skills gained within and outside of the SPCA.

SI Venter has also since welcomed a new Committee to the ELSPCA family. He also welcomes the public to drop by at the SPCA to meet him, his staff and to see what changes he has already implemented.

Support Local as this is YOUR SPCA!

**INSIDE
THIS
EDITION**

**02 - Sweet Charity | 02 - Chipping In
03 - Committed to Change
04 - Save these Dates**



Sweet Charity

Our charity shop operates primarily through the donation of good quality second-hand items that are resold to the public.

Please think of us before discarding unwanted items such as clothing, bric-a-brac, utensils, appliances, tools, furniture, curtains, blinds, toys, games, office supplies, sports equipment, radios, hi-fis, TVs, VCRs, decoders (in working condition), kennels, baskets, carriers and more.

Your donations to our Charity Shop help us raise funds for animals and provides a more affordable shopping experience for many communities in East London.



VISIT OUR SPCA CHARITY SHOP

There could perhaps be no better deal around – a shopping experience which leaves you feeling as good on the outside as it does on the inside.

Donated items can be delivered to the SPCA on weekdays from 8.30am to 4pm or on Saturdays from 9am to 12pm to 34C Vincent Road, Vincent. Alternatively, call the shop on 043 726 3966.

EL SPCA CHARITY SHOP

IT'S BETTER TO DONATE THAN ACCUMULATE!

WE WANT YOUR PRELOVED GOODS:

- CLOTHING • LINEN • BOOKS • KITCHENWARE
- ELECTRICAL ITEMS • FURNITURE • ORNAMENTS
- JUST ABOUT ANYTHING!

DBV SPCA EAST LONDON

043 726 3966 • 34C Vincent Rd • Email: collections@elspca.org.za

Chipping in

Many dog owners would agree that one of their biggest fears is being unintentionally separated from their pet. Unfortunately, there are many ways in which this can happen. Whatever the reason for your separation, it can be devastating for both of you.

During disasters human life takes priority and although the SPCA forms part of the disaster operations, the animals are in most cases rescued last. They are then taken to a temporary holding facility and this is where identification and traceability is most important.

Pet micro-chipping is becoming increasingly popular and a form of identification that can help you get reunited with your dog but many still have concerns about it.

To help you make an informed decision about dog micro-chipping, here are the pros. Most municipal by-laws require pets to be identified, although there may be a lack of enforcement, having an identified animal could save its life.

Cases are on record of pets going missing and being reunited with their families 10 years later.

Pros of dog micro-chipping include:

ID that cannot be tampered with

Unlike tags and collars which can be removed, micro-chips are inserted under the skin. They are about the same size as a grain of rice which also makes it difficult to find once inserted. The ID number stored on the microchip refers to a database entry which can only be changed with the chip provider after passing rigorous security checks.

Micro-chipping is a painless procedure

Many owners worry that placing a microchip inside their dog's body will hurt. In fact, the procedure takes seconds and no anaesthetic is required. The chip is injected between the shoulder blades, and your dog won't feel a thing.

Scanning and tracing

Any vet, animal welfare organisation and SPCA across the world are able to scan every animal that enters the facility to check for a micro-chip. The details are traced through the relevant registry websites across the world.

The microchip shouldn't ever need replacing

There are no working parts, and the chip is inactive until it comes into contact with a scanner, ergo it is completely safe and shouldn't ever need replacing.

Your personal information is safe

We live in an age where identity theft is a problem. Fortunately, the personal information that you share when you microchip your pet is very safe. No data other than the unique reference number is stored on the chip, and this refers to an entry on a database that is managed and secured by the microchip provider. Only authorized parties have access.

It is important to note: IT IS NOT A GPS OR REMOTE TRACKING DEVICE

When you change telephone numbers and/or address, make sure the details are updated with the relevant database management systems. THIS IS FREE.

If you are unsure about where your pet is registered, take it to the local SPCA / Vet to be scanned and they can trace the relevant database and update your information.

ADOPTION ADVICE

Pup or Adult?



Not sure which to adopt? Who will best suit your family and routine? Pups are cute and you can train them easily—but do you have the time and know how? Adults can have some unwanted habits and retraining may take a little longer—but you can assess their temperament, size and health right off. Think carefully and choose wisely.



www.nspca.co.za

The SPCA receives no government funding at all and exists entirely on funds donated by the public. Your contribution will help us make a difference to an animal in need.

Here's how you can help ...

- Donate blankets and food for the animals in our care
- Donate unwanted goods to our charity shop | Sponsor a kennel
- Sign up for a monthly debit order | Join our fundraising team
- Donate your skills such as plumbing, handyman work, IT Tech, etc
- Host an event for our SPCA to help raise funds (Prior Trademark approval required) | Support and share our events



Your love could be your lasting legacy - One of the most amazing ways to do this is by remembering the East London SPCA in your Will - It costs you nothing now - but it goes a long way to protecting animals beyond our lifetimes.

CHANGE THEIR LIVES WITH YOUR MONTHLY CONTRIBUTION

Did you know that your small monthly contribution will help us to keep the lights on and assist us in our fight against animal cruelty? You can sign a monthly debit order.

Any amount, large or small make a difference. Sign up today. E-mail: reception@elspca.org.za

East London SPCA Nedbank
Acc No.: 1045108065
Branch: 19-87-65

Committed to change



Tarja Jordaan



Eric Naude



Rochelle Louw



Trevor Willard



Zimasa Kala



Animals and nature go through growing pains and shed old skin and fur as it outgrows its existing being.

Metamorphosis is the changing of shape into a more sophisticated form of an animal. As time elapses, change is imminent.

The East London SPCA (ELSPCA) is no different and have been undergoing a metamorphosis for the past year, and just like some exoskeletal species shed their hard shells, taking on new and bigger ones, so too the ELSPCA is in the process of settling into its new hard shell.

On 1 January 2022, a new general manager was appointed. This man has decades of experience in the SPCA and animal welfare environment, bringing along with him modernised ideas, skilled knowledge and the ability to lead and train existing teams that are in place.

This is no easy task as the society had been left to operate with outdated systems, lack of forward thinking, lack of operational maintenance and training. This is in no way a reflection of past management, rather a case of

an ostrich with its head in the sand having to withstand daily sandstorms and deal with the increased number of animals flowing through the revolving doors every day.

This bank of animals creates an over-extended budget and resources. It is for this reason that fresh flesh was needed.

Since the inception of the new management, they have had to deal with a backlog of fiduciary responsibilities, audits and had to restore the organisation to its former glory, with the enhancements of modern technology as well as the interaction with you, the public.

The management daily seeks the absorption of members to fulfil its constitutional obligation of having a constituted committee to ensure that funds are not embezzled and to ensure the ELSPCA runs smoothly. The training of skilled staff as required by the SPCA Act has also been beefed up as well as the physical maintenance of the financial status and physical structures (kennels / shelter). The management also had to deal with a sudden flood (a physical waterfall inside the offices), which meant rescuing the

animals from flooded areas as well as dealing with an increase in rabies cases.

All in all, during the past two months, the skeleton (staff) has braved through the changes, the head has found its rightful place and the heart (the organisation) is still pounding away to ensure all the organs remain fully functional to fight for and protect animals. The operational responses underwent severe tests and have passed the initial trials, with the organisation now fully compliant as per constitution, and fully operational.

The new management still needs YOU!

You to join

You to support

You to donate

You to Adopt

You to Volunteer

You to help educate those that do not know better

You to help become a voice to the VOICELESS (the animals)!

HELP and become part of the Modernization of East London's ANIMAL WELFARE in the forefront!



the 5 freedoms

Freedom from hunger and thirst: by ready access to fresh water and a diet to maintain full health and vigour.

Freedom from discomfort: by providing an appropriate environment including shelter and a comfortable resting area.

Freedom from pain, injury or disease: by prevention through rapid diagnosis and treatment.

Freedom to express normal behaviour: by providing sufficient space, proper facilities and company of the animal's own kind.

Freedom from fear and distress: by ensuring conditions and treatment which avoid mental suffering.



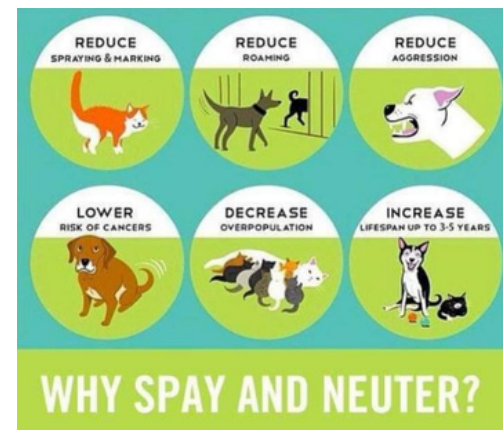
Every dog has a unique nose print with no two alike.

Starfish do not have a brain.

Feline's Jaws Cannot Move sideways.

94% of pet owners say their animal pal makes them smile more than once a day.

Fun facts courtesy of animalmedical.org/fun-facts



EL SPCA Family Fun Day

SAT, 23 APRIL 2022

EASTER EGG HUNT at 10:30am
COST: R10 per child

8:30am - 12:30pm

ENTRY FEE: TIN OF DOG/CAT FOOD

JOIN US FOR A FUN-FILLED DAY WITH STALLS & JUMPING CASTLE!

ALL CLUB COVID PROTOCOLS TO BE ADHERED TO



EAST LONDON

GOLF DAY

Saturday WEST BANK GOLF CLUB

4 JUNE 2022

BETTERBALL STABLEFORD

R270

per player

(R1 080 per team)

TO BOOK YOUR TEE-OFF & MAKE PAYMENT

WEST BANK GOLF CLUB PRO-SHOP
043 731 1523

PRIZES UP FOR GRABS

Nearest to the pin on 3rd & 17th
Longest Drive on 18th
Most Golf (2 prizes)

REFRESHMENT HAMPER RAFFLE!

Want to sponsor or donate?

Tees & Greens Sponsorships - R750 per green or tee
Signboards/Teardrop banners on putting green - R500

CONTACT: Patricia 083 380 1233 / 043 745 1441
or email fundraising@elspca.org.za

80'S THEMED SPIN-A-THON

3 HOUR SPINATHON IN THE SPINNING STUDIO

FOR THE SPCA EAST LONDON
>>> JOIN THE CHALLENGE <<<



Hilo, Cardio Box, Zumba and Aerobics will take place outdoors weather permitting.

SATURDAY THE 30/04/2022 FROM 9AM!

DONATIONS: BLANKETS, FOOD & TOYS.

Bring your kids along as there will be Face Painting, Jumping Castle and Boerie Rolls on sale for R20

There will be Refreshments for all participants along with goody bags for all spinning Participants.
80's DRESS CODE THEME

BOOK YOUR SPOT: 043 008 5029



www.edgefitness.co.za



EAST LONDON

BIKER BREAKFAST RUN

22 MAY 2022

08H30 ★ MEET AT THE GERMAN SETTLERS MONUMENT (BEACHFRONT)

BIKER'S ENTRY: R70 PER BIKER/PASSENGER
(INCLUDES BREAKFAST BUN & BADGE)

VENUE ★ HAMS SPORTS CLUB

PUBLIC ENTRY: ADULTS R20 • KIDS U/12 R10

★ JUMPING CASTLE • STALLS • TATTOO ARTIST • BAR SPECIALS ★

All proceeds go to East London SPCA

ENQUIRIES: 083 380 1233, fundraising@elspca.org.za